
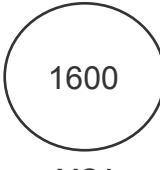
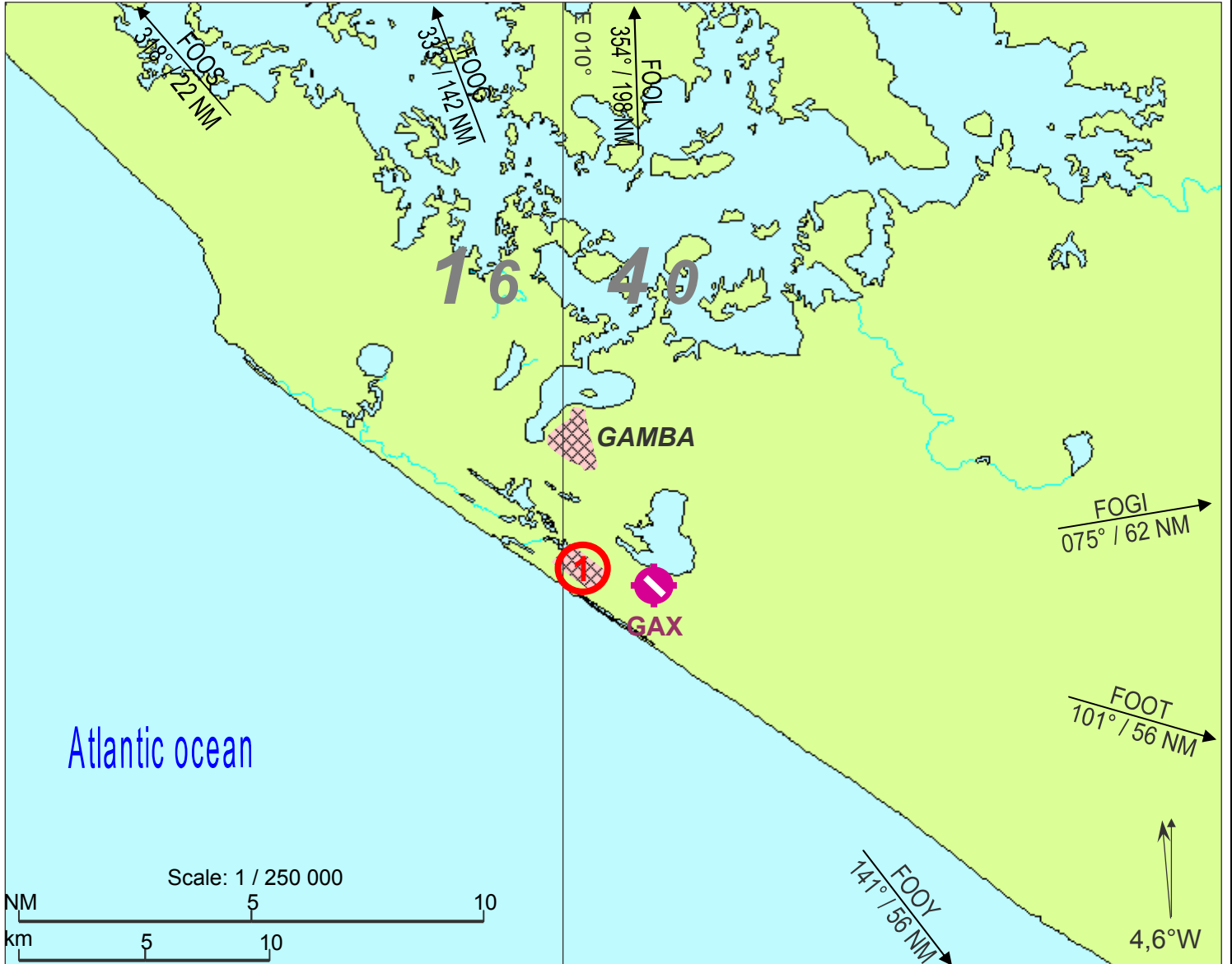


AFRICA'S CONNECTION 	SOP -SECTION C1.6- VFR ROUTES AND AIRFIELDS	Page: AREA1/1	Amdt N°: 1	Updated: 31 OCT 08	Full name: GAMBA
		Radio: HF : 8903 USB (BRAZZA) VHF : 119.00 (AFIS) 118.10 (A/A) 126.30 (SCD OPS) Radio call: GAMBA TRAFFIC	Elev.: 30 ft  1600 MSA GAX13	Coordinates: GAX13 S02°47.00 E010°02.66 GAX31 S02°47.50 E010°03.44	



RWY	LENGTH	WIDTH	SURFACE	LIGHT	FUEL
13	1800 m	30 m	BITUMEN	NIL	NIL
31				NIL	

OBSERVATIONS:

①: OIL PRODUCTION CENTER, DO NOT OVERFLY!

CHANGES: first issue



**A) GENERAL INFORMATIONS****TYPE OF SERVICE:**

Charter flights for Shell Gabon.

SCD REPRESENTATIVE

M.DOUKAGHA Henri (Local manager): GSM 00241 07 52 54 01

TECHNICAL ASSISTANCE

NIL

FIRE FIGHTING AND RESCUE

By Shell Gabon.

HANDLING

By SCD

PARKING

No tie downs.

FUEL

JETA-1.

GROUND COMMUNICATION

GSM network.

ACCOMMODATION

Hotel: 20 min taxi fm airport.

Or Shell accommodations on Yenzi Gamba base. PPR 24 h.

B) OPERATIONNAL PROCEDURES**ENROUTE:**

At low FL (bellow 055), caution is required due to numerous helicopters in the vicinity.

ARRIVAL PROCEDURE

Avoid to fly over the oil plant located approx 2 NM N-O of airfield.

ALTERNATE AIRFIELDS

E120: FOOG, FOOL, RAB (commercial alternate for Shell), FOOY.

D228: FOOG, FOOL, RAB (commercial alternate for Shell), FOOY.

PC6T: FOOG, FOOL, , RAB (commercial alternate for Shell), FOOY, IGA.

DEPARTURE PROCEDURE

Do not fly over the oil production center approx 1,5 NM N-W of airfield.

C) FLIGHT FILE CONTENTS, SPECIFIC ITEMS:**WEATHER**

Local station: YES. Call AFIS before departure, or local representative of SCD (non aeronautical).

NOTAM's

FOOH, FOOG, FOOY

**D) MISCELLENEOUS**

Boarding / disboarding with engines running strictly forbidden.

Fixed GPU (cable approx. 30 m long) owned by Shell on the apron.

Ask GPU assistance only if absolutely necessary.