
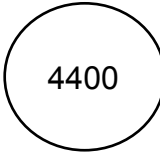
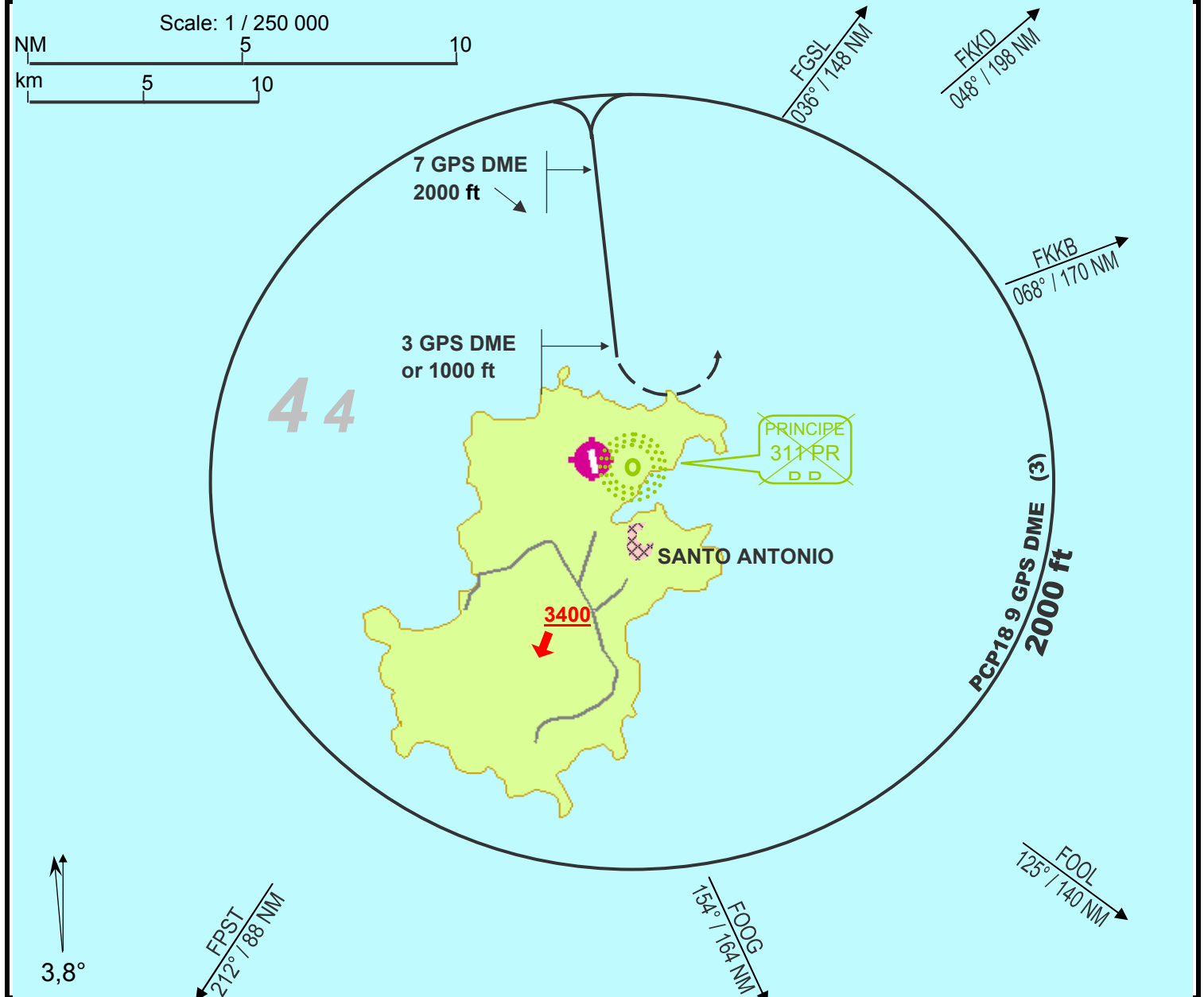


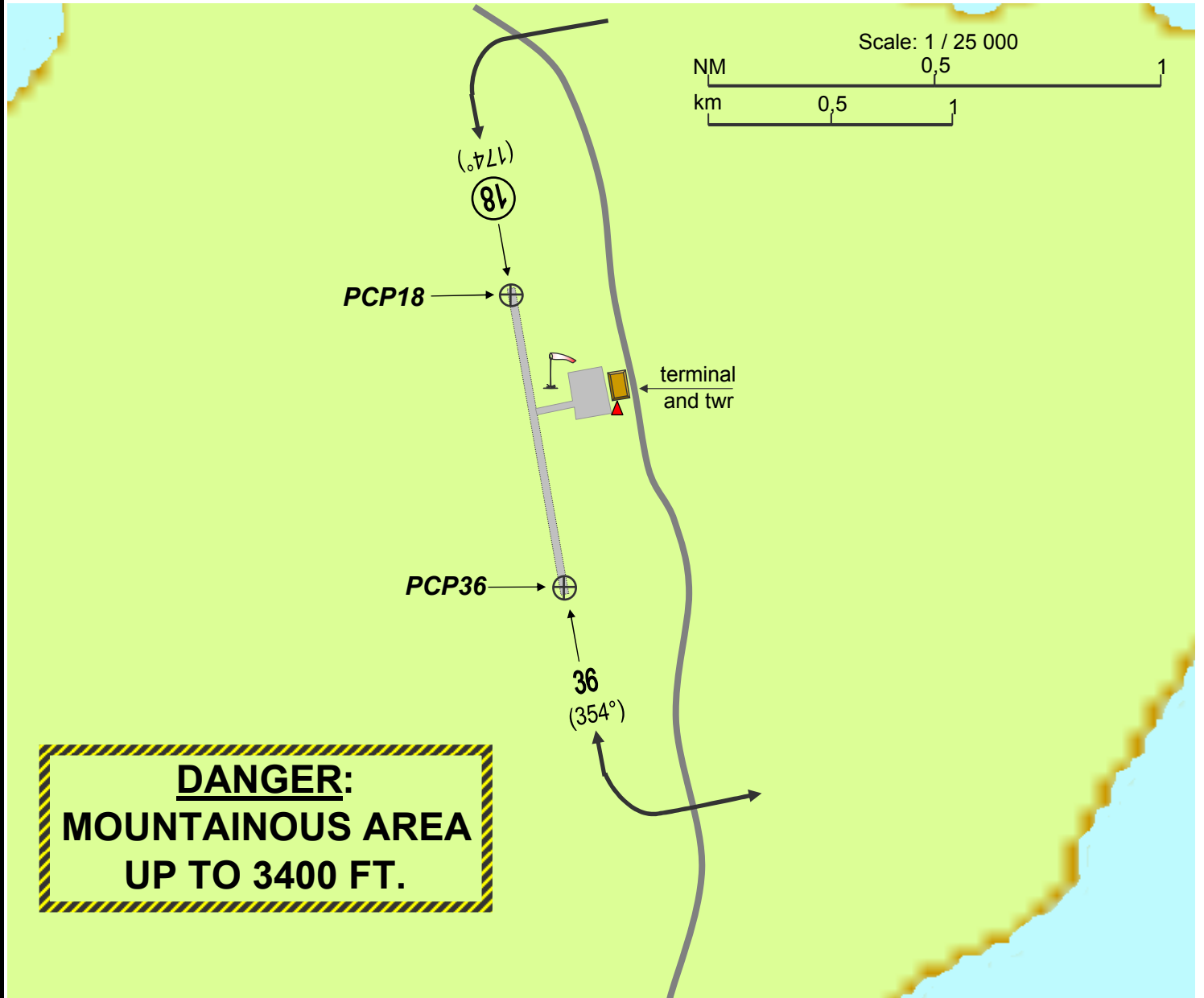
AFRICA'S CONNECTION 	SOP -SECTION C1.6- VFR ROUTES AND AIRFIELDS	Page: AREA1/1	Amdt N°: 1	Updated: 31 OCT 08	Full name: PRINCIPE
Radio: HF : NIL VHF : 118.90 (AFIS) (1) 127.10 (Sao Tome ctrl) Radio call: PRINCIPE TRAFFIC		Elev.: 584 ft  4400 MSA	Coordinates: PCP18 (2) N01°40.07 E007°24°.38 PCP36 (2) N01°39.26 E007°24°.46		3-letter & ICAO code: PCP FPPR CATEGORY "B" Owner: UNKNOWN



RWY	LENGTH	WIDTH	SURFACE	LIGHT	FUEL
18	1320 m	30 m	BITUMEN	NIL	NIL
36				NIL	

OBSERVATIONS:
 (1) : poor range on AFIS frequency toward the South (approx 10 NM due to mountain).
 (2) : thresholds coordinates may not be accurate. Need to be checked on site.
 (3) : refer to arrival procedure page TEXT1/2.

CHANGES: first issue



**A) GENERAL INFORMATIONS****TYPE OF SERVICE:**

Regular service by Africa's connection.

SCD REPRESENTATIVEAt Principe: (Bom Bom lodge manager). GSM: **TBN**M. Carlos Pinero (Africa's connection representative). GSM: **TBN**

At Sao Tome: (Africa's connection local manager). GSM: +239 903 625

TECHNICAL ASSISTANCE

NIL

HANDLING

YES

PARKING

No tie downs. Gravel, taxi with caution.

FUEL

NIL

GROUND COMMUNICATION

GSM network. Za'in inop.

ACCOMMODATION

Bom Bom island resort for pax and crew. 10 min drive fm airport. Ask local management for transport.

B) OPERATIONNAL PROCEDURES**ENROUTE:**

No remark.

ARRIVAL PROCEDURE

All traffic patterns East of airfield. West side prohibited over the island (mountainous area).

In marginal VFR conditions, if island not in sight within 9 NM before PCP, use only rwy 18 as follows:

Intercept a 9 GPS DME arc on PCP18 (by West or East) not below 2000 ft.

Once on rwy axis (OBS 174°), start descent at 7 GPS DME until visual contact established.

If no visual contact at 3 GPS DME or 1000 ft, go around with immediate left turn & climb to 1500 ft min.

Using of radar in MAP MODE recommended for crosschecking of GPS position.

ALTERNATE AIRFIELDS

D228: FPST, FOOG, FOOL, FGSL

PC6T: FPST, FOOG, FOOL, FGSL

DEPARTURE PROCEDURE

Preferential rwy: 36 with left turn out after crossing acceleration altitude.

C) FLIGHT FILE CONTENTS, SPECIFIC ITEMS:**WEATHER**

Local station: AFIS, local representative (not aeronautical observation), or relay via Sao Tome control.

NOTAM's

FPPR, FPST, FOOG, FOOL.

CHANGES: first issue

D) MISCELLENEOUS

No remark.